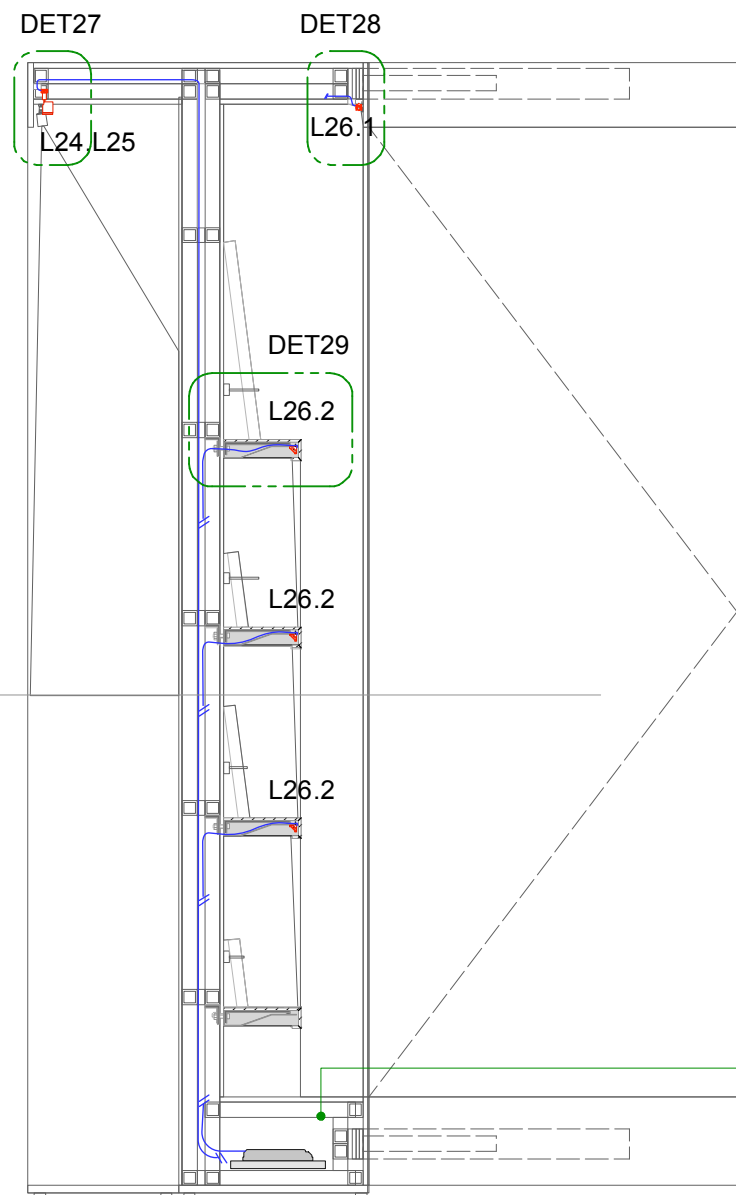


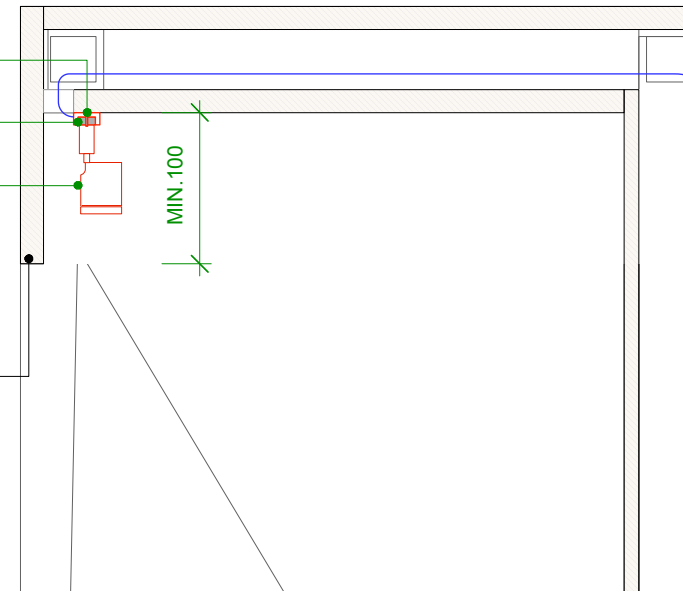
SECTION_DET25
Showcase E4, E7
1:20



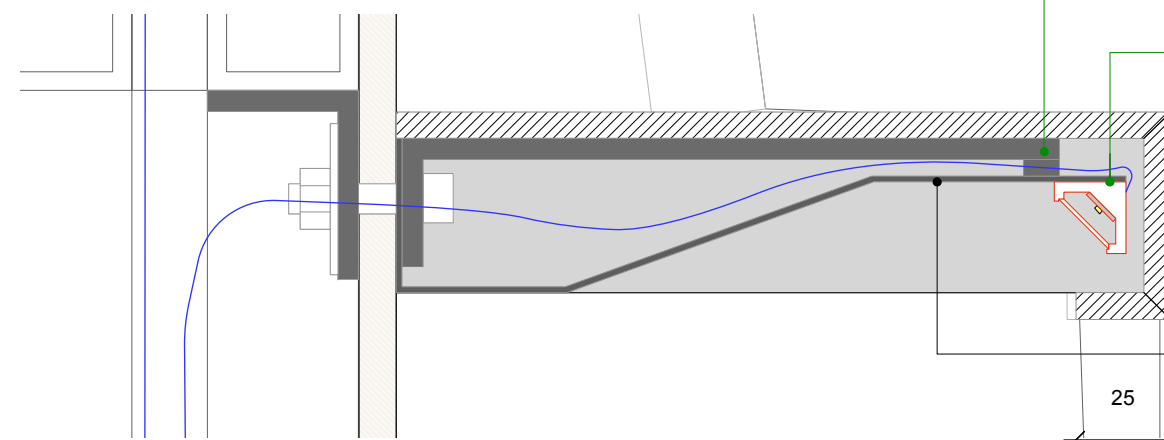
Track holder, magnetic (screwed on)
L23_Magnetic track
L24, L25
Power LED spot luminaire, manual dimming, 3000K or 5500K
Front blind

Reserve space for electronic instruments, Request good ventilation system and revision panel to access the devices.

SECTION_DET27
Showcase E4, E7
1:5



SECTION_DET29
Showcase E4, E7
1:2



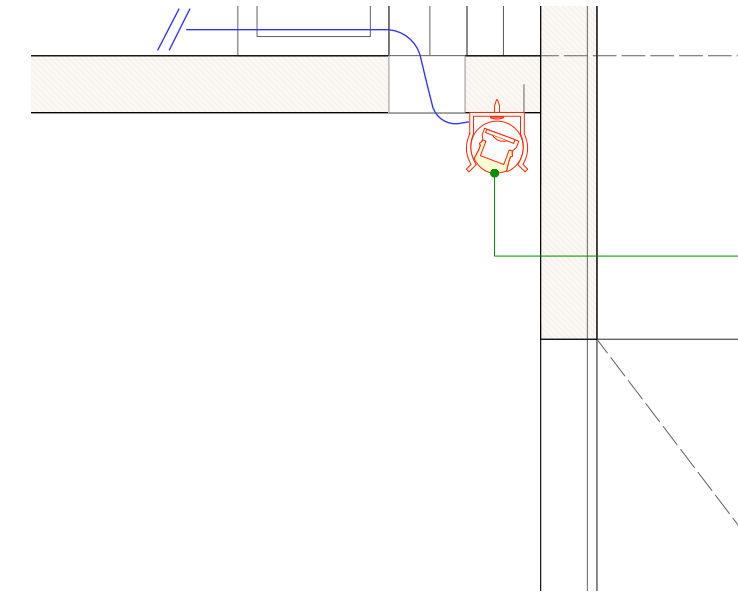
L26.1
SMD LED linear luminaire, diffuse lens 30° + round aluminum profile, 17.3W/m, 2700K- 5700K

Self-structure to be shorter than shelf length to provide space for cabling. Minimum gap for cable at 10mm.

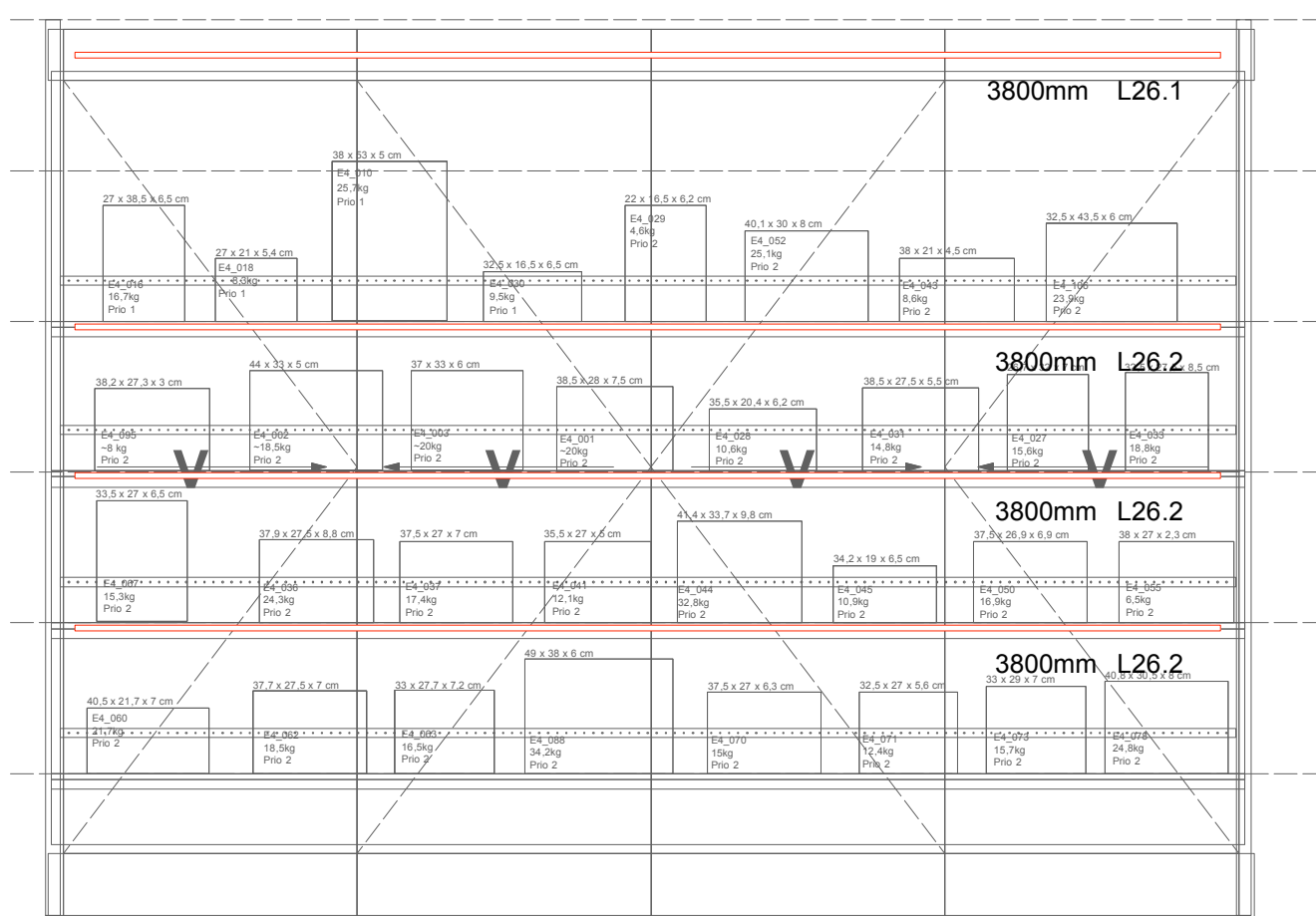
L26.2
SMD LED linear luminaire triangle aluminum profile, diffuse cover, 17.3W/m, 2700K- 5700K,

Cover sheet under the shelf, silver, matte finish

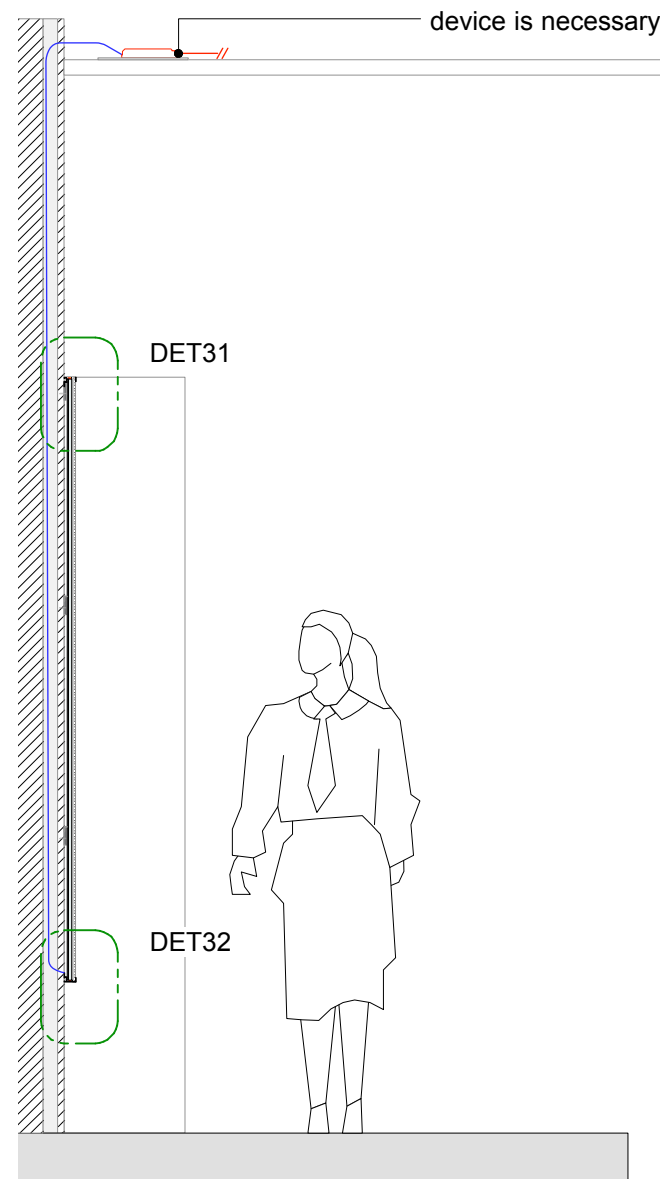
SECTION_DET28
Showcase E4, E7
1:2



ELEVATION_DET26
Showcase E4
1:25

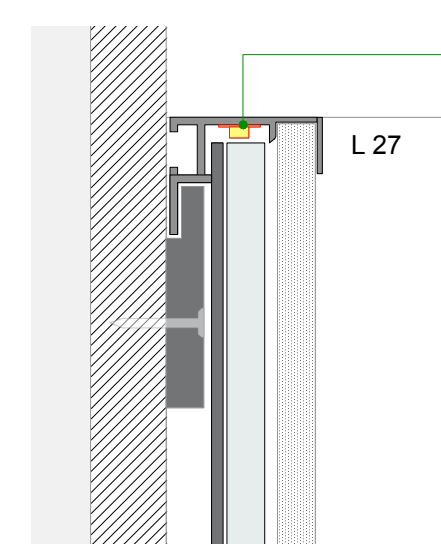


SECTION_DET30
Backlit wall
1:25



External transformer located above the ceiling, Revision door to access the device is necessary

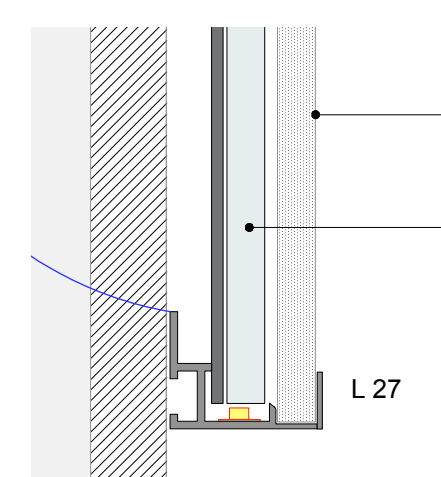
SECTION_DET31
Backlit wall
1:2



L 27_Lightpanel with visible anodised aluminum frame, 2000mm x 2000mm x 30mm
LED light : 3000K-5700K, 1-10V manual dimming at luminaire, external transformer to be located at revision space near luminaire position, Power supply 24VDC - 150 W (104W required)

**Mounting detail refer to product installation

SECTION_DET32
Backlit wall
1:2



Graphic surface
Direct print graphic on plexiglass
Side light emitting sheet

**Wall outlet position to be defined in a further stage

LEGEND

SPECIALISTS

M	MEDIEN
G	GRAPHIC
L	LIGHT
TGA	BUILDING TECHNOLOGY
	EXHIBITION ATB

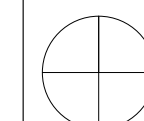
PRELIMINARY

MUST
MUSEUM STAVANGER

NORWEGIAN PRINTING MUSEUM
STAVANGER

KEY PLAN

North



AREA PLAN **MODULE A, E**
Showcase E4,E7_Contextual Image

client
Museum Stavanger
Øvre Strandgate 88
4005 Stavanger | Norwegen
T. +47 40 60 17 01
www.museumstavanger.no
bitten.bakke@museumstavanger.no

planner exhibition szenography
ATELIER BRÜCKNER GMBH
Krefelder Strasse 32
70376 Stuttgart | Germany
T. +49 711 5000 77 116
F. +49 711 5000 77 22
ngm@atelier-brueckner.com

papersize scale unit sign
DIN A2 N/A mm sm

filename
NGM-ATB_D_1.1.0.0_08

date code planningphase
02.09.2019 NGM-ATB LPH 4 - DD

type hierarchy no. index
D 1.1.0.0 08 00