

LEGEND

SPECIALISTS

M	MEDIEN
G	GRAPHIC
L	LIGHT
TGA	BUILDING TECHNOLOGY
	EXHIBITION ATB

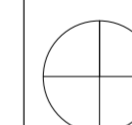
PRELIMINARY

**MUST**  
 MUSEUM STAVANGER

NORWEGIAN PRINTING MUSEUM  
 STAVANGER

KEY PLAN

North



AREA PLAN

OVERALL AREA

Shelf\_Light cassette 1

client Museum Stavanger  
 Øvre Strandgate 88  
 4005 Stavanger | Norwegian  
 T. +47 40 60 17 01  
 www.museumstavanger.no  
 bitten.bakke@museumstavanger.no

planner exhibition scenography ATELIER BRÜCKNER GMBH  
 Krefelder Strasse 32  
 70376 Stuttgart | Germany  
 T. +49 711 5000 77 116  
 F. +49 711 5000 77 22  
 ngm@atelier-brueckner.com

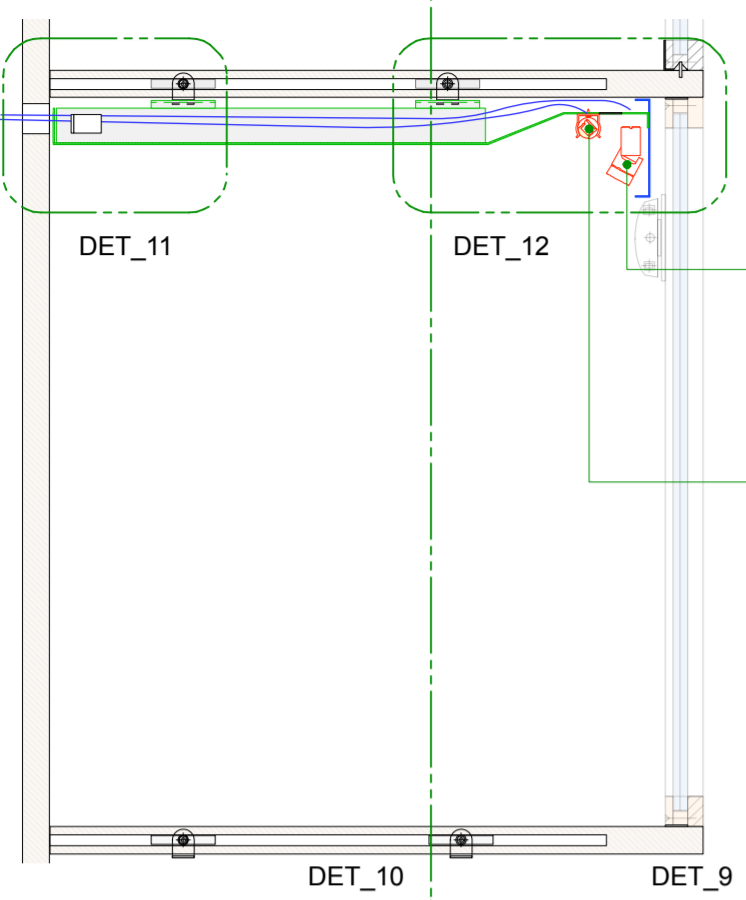
papersize	scale	unit	sign
DIN A2	N/A	mm	sm

filename  
 NGM-ATB\_D\_1.1.0.0\_04

date	code	planningphase
02.09.2019	NGM-ATB	LPH 4 - DD

type	hierarchy	no.	index
D	1.1.0.0	04	00

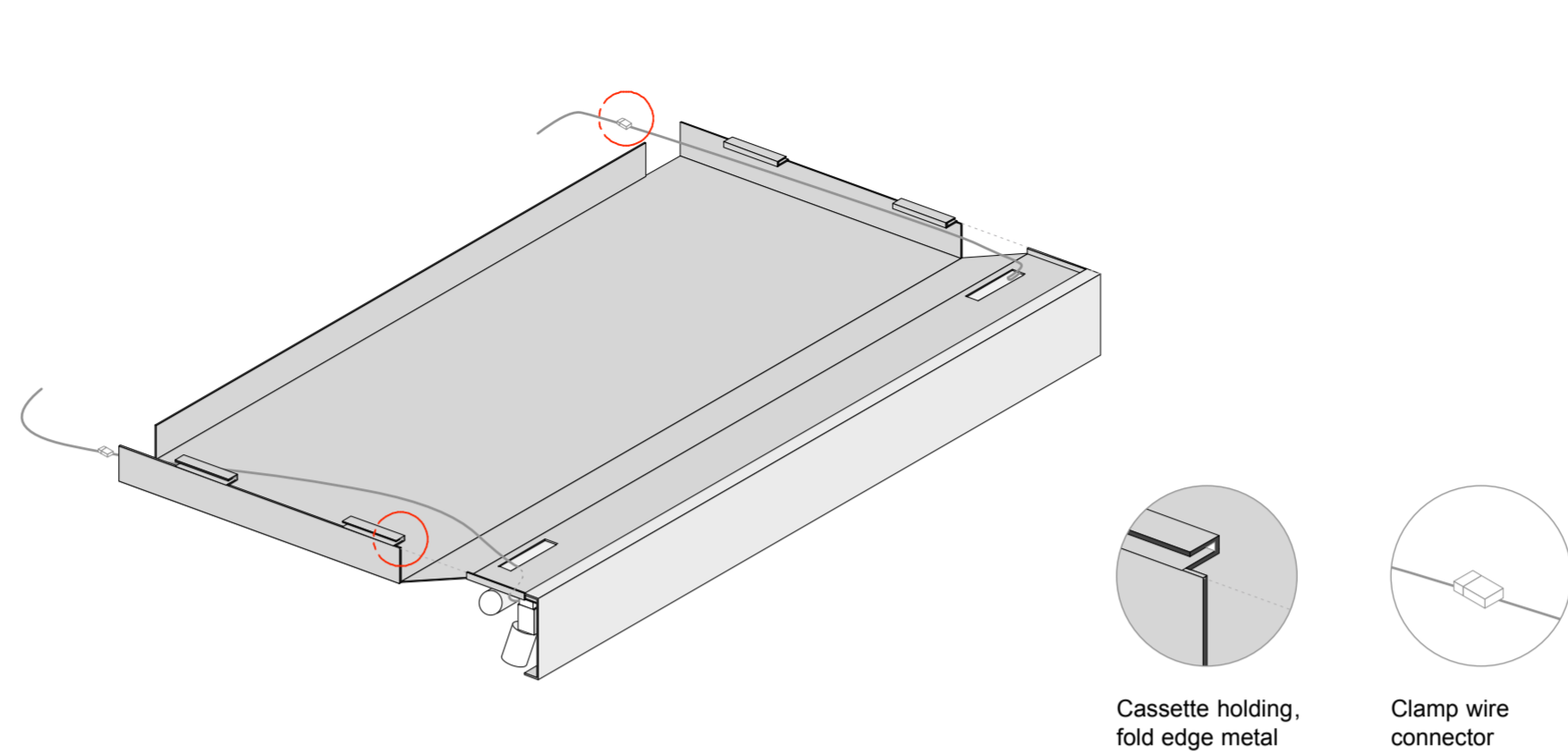
**SECTION\_DET6**  
 Lettercase shelf / Showcase\_Lighting cassette  
 1:5



L 21, L22\_Miniture  
 Magnetic spot  
 3000k and 5500k,  
 manual dimming at  
 luminaire position,  
 LED tranformer and  
 driver at  
 revision space inside  
 the showcase

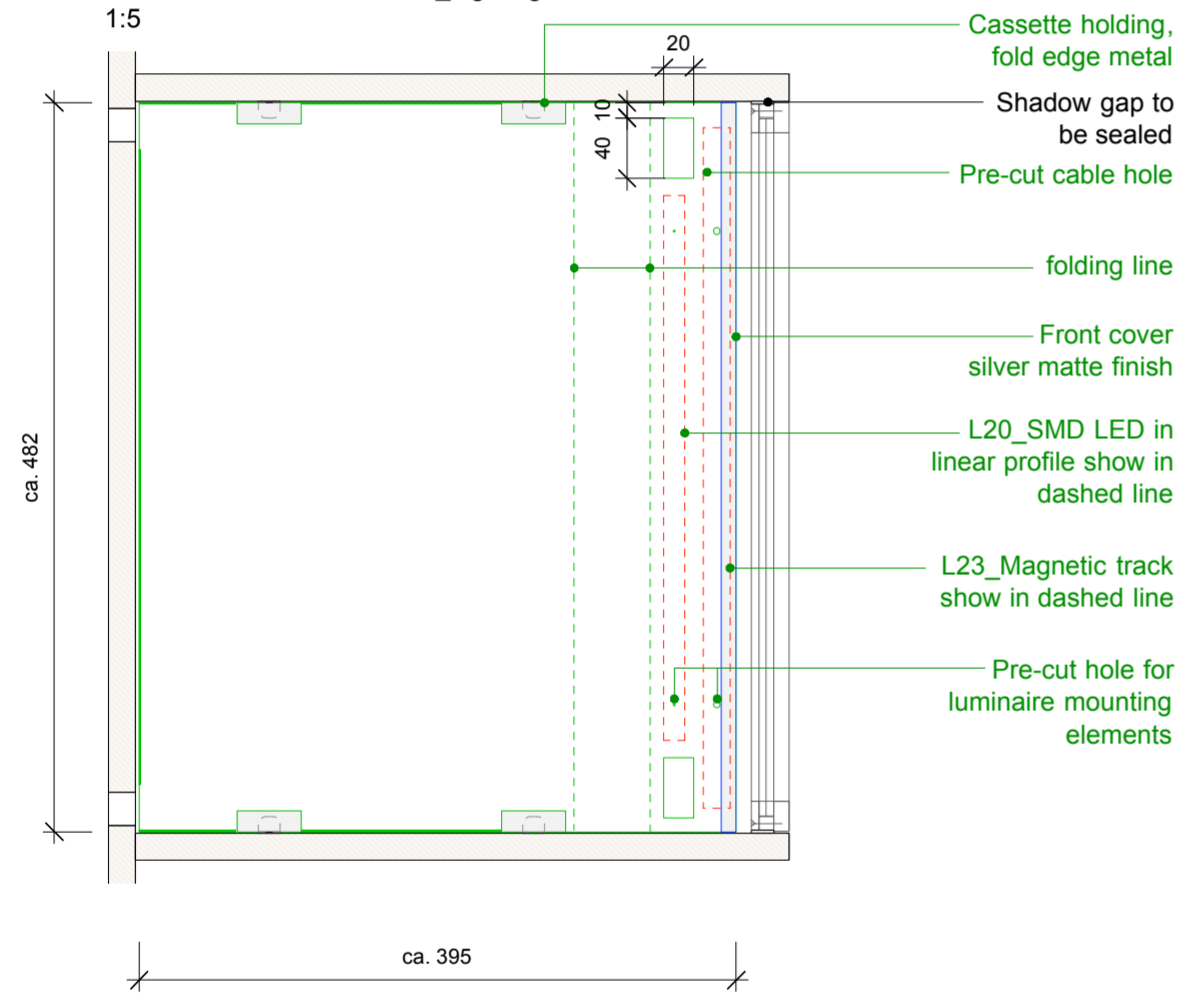
L 20\_SMD LED in  
 linear profile  
 diffuse cover,  
 2700K-5500K, manual  
 dimming 2CH at revision  
 space, individual dimming  
 for each panel.  
 4 channel driver

**ISOMETRIC\_DET8**  
 Lighting cassette

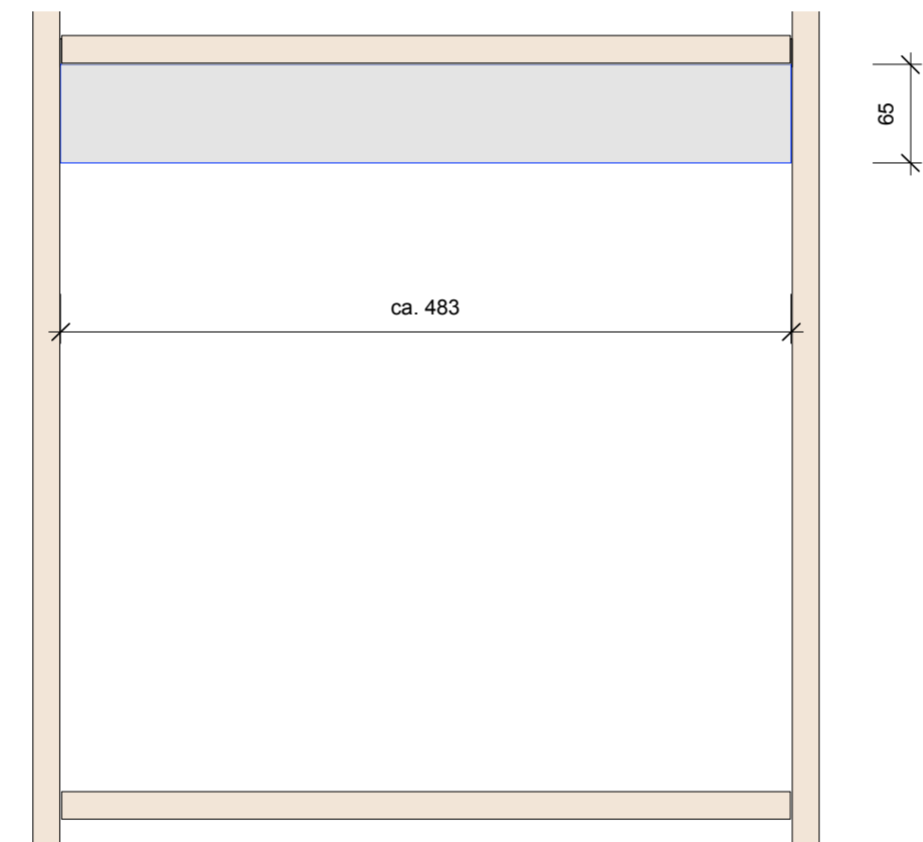


\*\*Production drawing to  
 be provided by  
 manufacturer  
 \*\*Prototype mock-up is  
 requested

**TOP VIEW\_DET7**  
 Lettercase shelf / Showcase\_Lighting cassette  
 1:5



**ELEVATION\_DET9**  
 Lettercase shelf / Showcase\_Lighting cassette  
 1:5



**SECTION\_DET10**  
 Lettercase shelf / Showcase\_Lighting cassette  
 1:5

