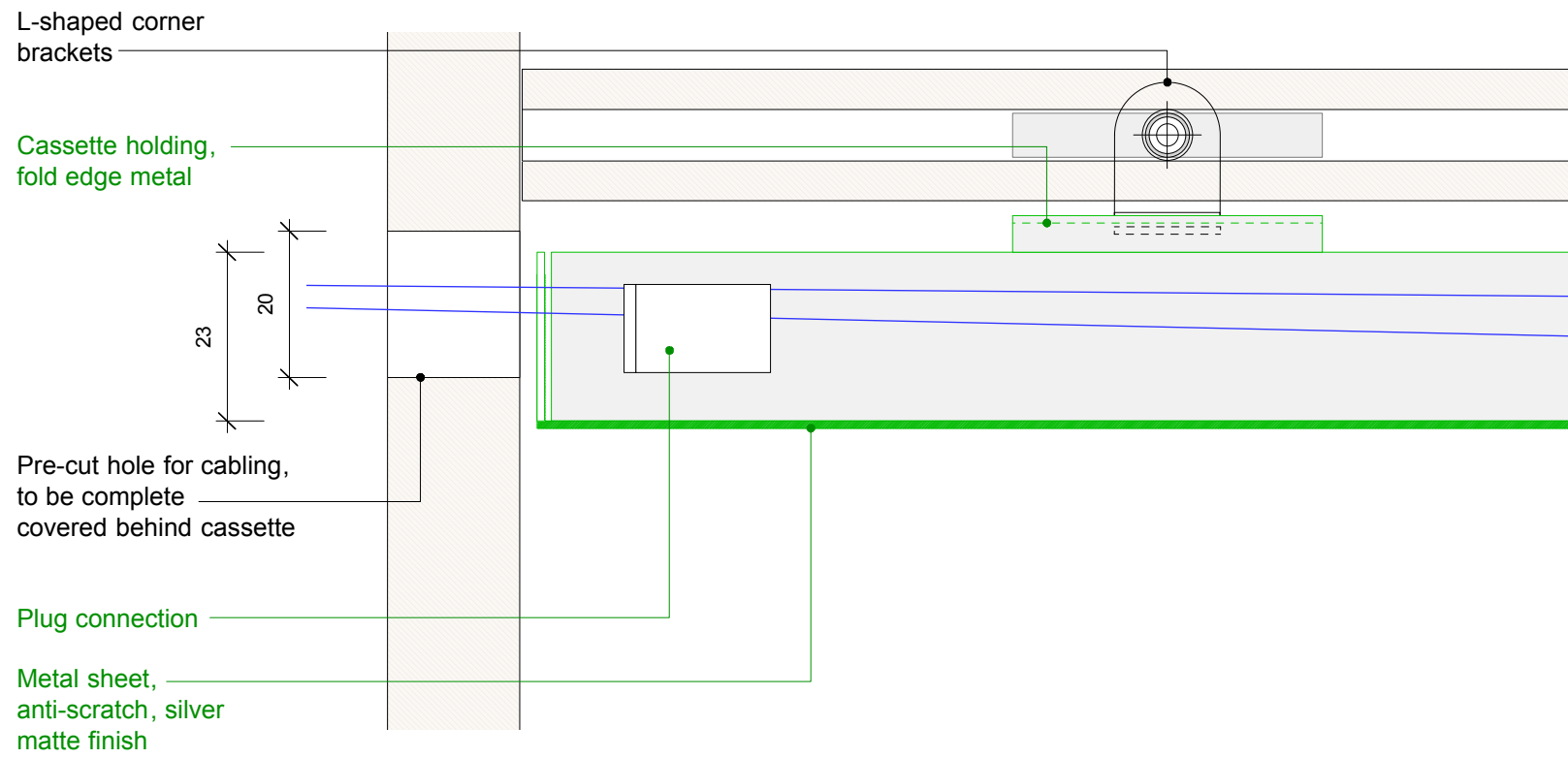


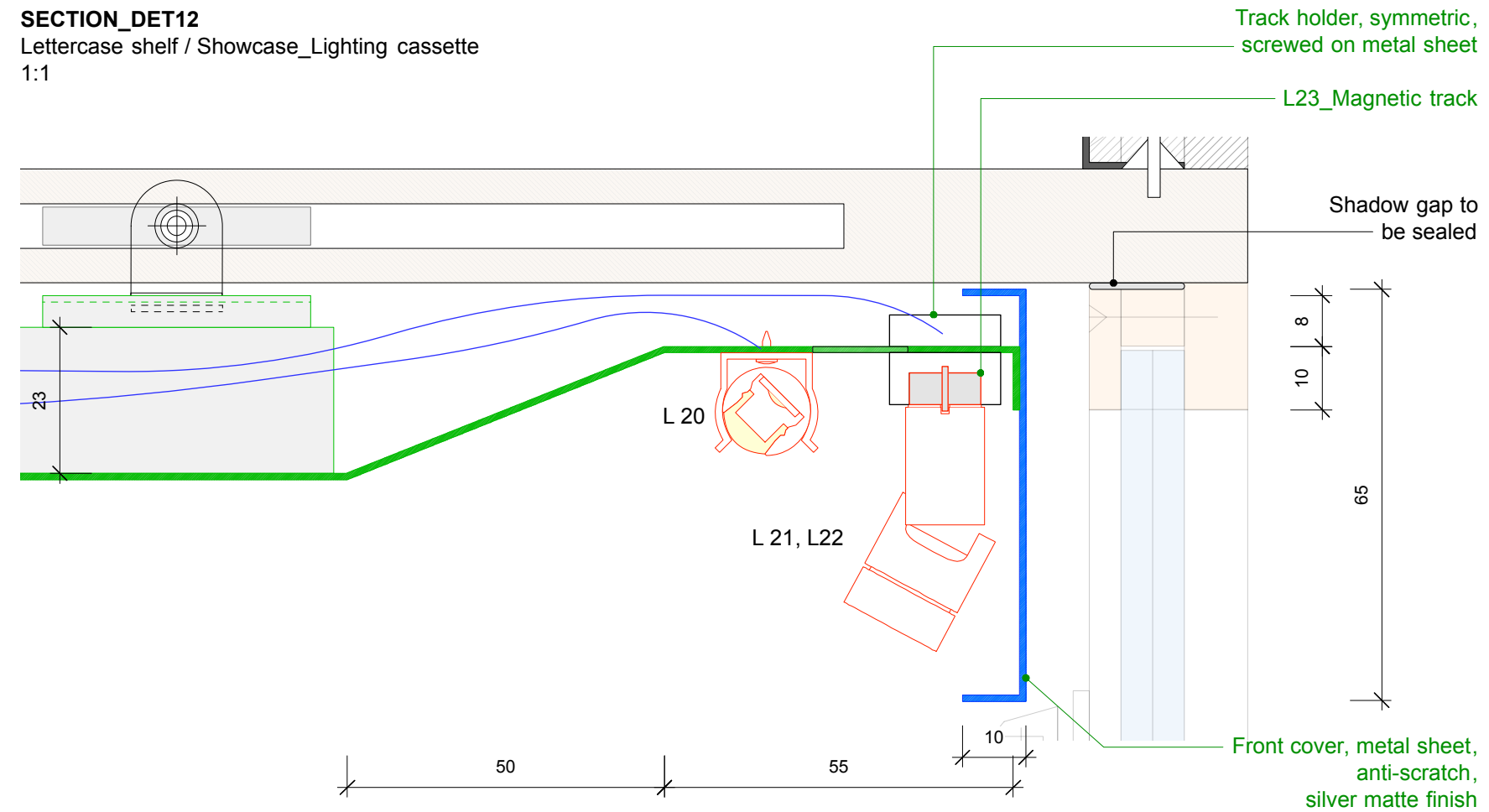
SECTION_DET11

Lettercase shelf / Showcase_Lighting cassette
1:1



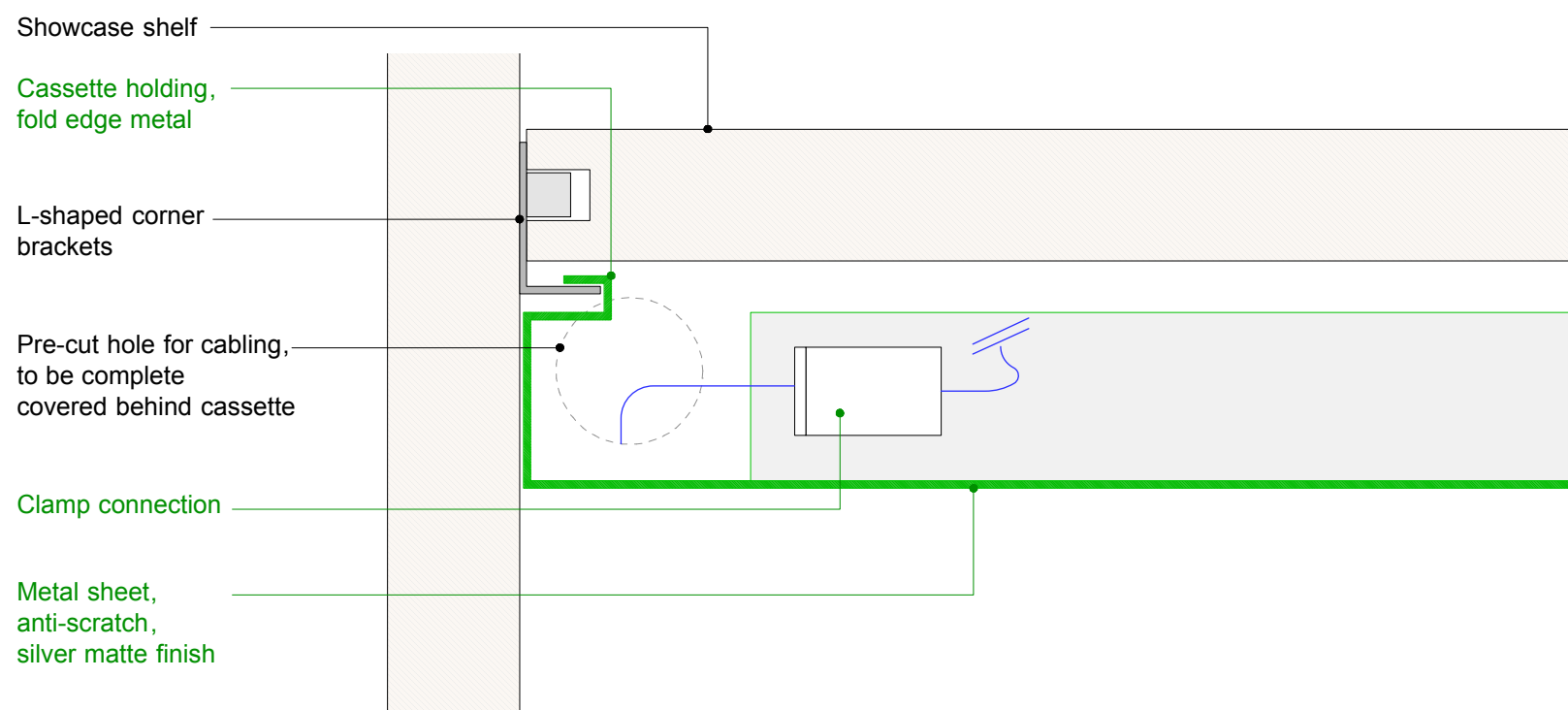
SECTION_DET12

Lettercase shelf / Showcase_Lighting cassette
1:1



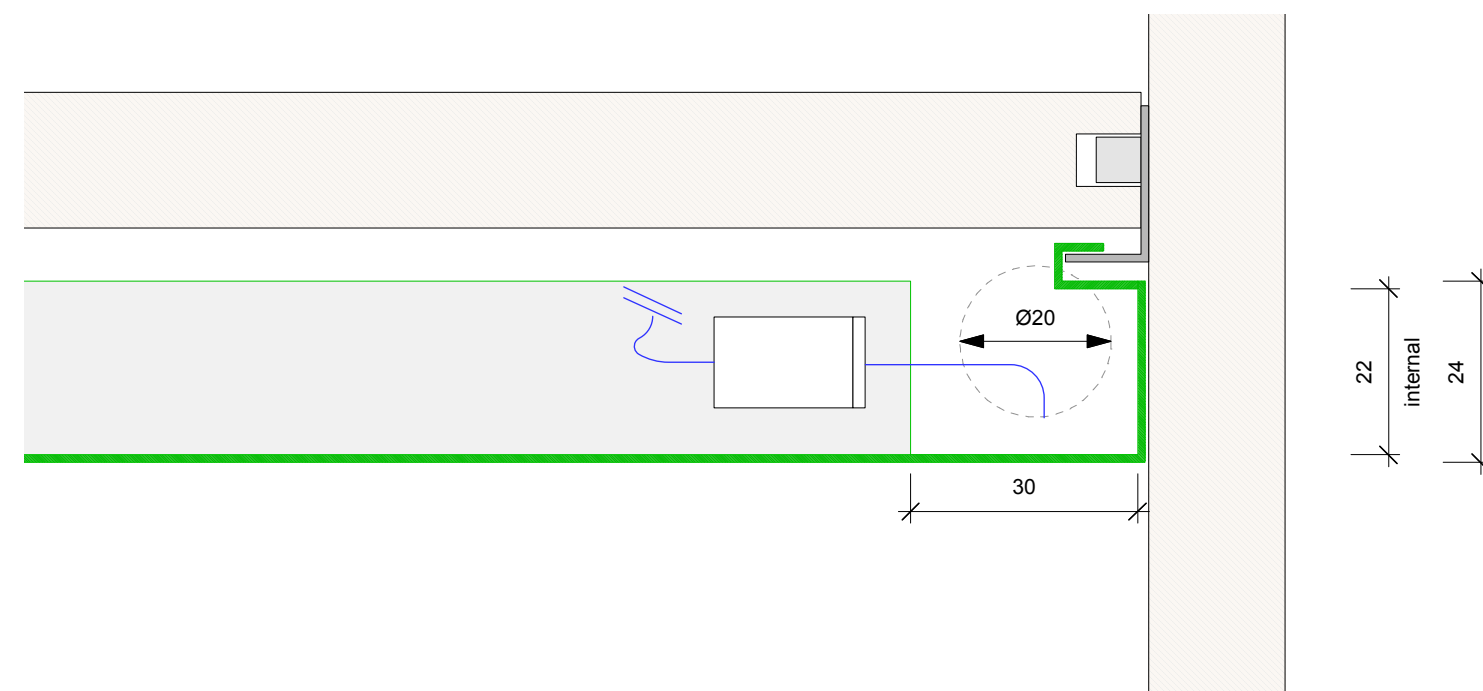
CROSS SECTION_DET13

Lettercase shelf / Showcase_Lighting cassette
1:1



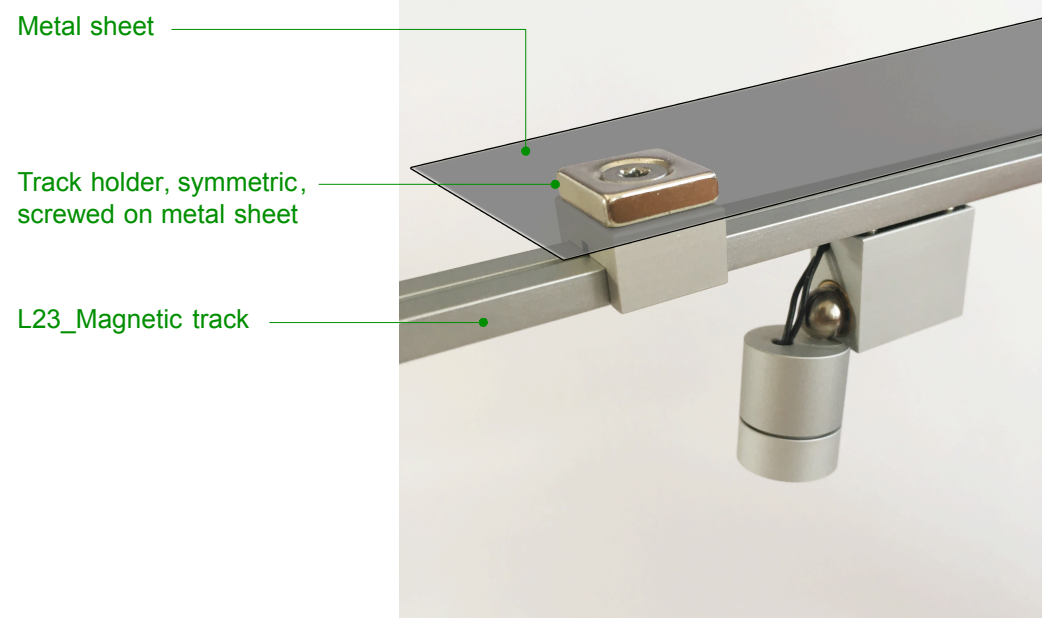
SECTION_DET14

Lettercase shelf / Showcase_Lighting cassette
1:1



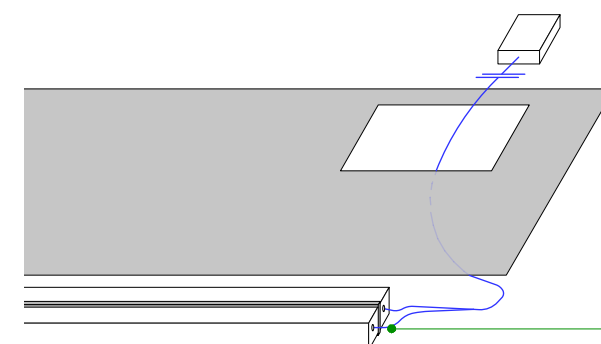
REFERENCE IMAGE

Magnetic track and Mounting element



ISOMETRIC

Magnetic track and cabling



To avoid the confusion over the plus and minus wiring, the connection cable to the magnetic track shell not be removed from the track

To remove the track, the connection plug should be inserted through the cable hole.

LEGEND

SPECIALISTS

M	MEDIEN
G	GRAPHIC
L	LIGHT
TGA	BUILDING TECHNOLOGY
	EXHIBITION ATB

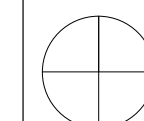
PRELIMINARY

MUST
MUSEUM STAVANGER

NORWEGIAN PRINTING MUSEUM
STAVANGER

KEY PLAN

North



AREA PLAN

Shelf_Light cassette 2

OVERALL AREA

client Museum Stavanger
Øvre Strandgate 88
4005 Stavanger | Norwegian
T. +47 40 60 17 01
www.museumstavanger.no
bitten.bakke@museumstavanger.no

planner exhibition scenography ATELIER BRÜCKNER GMBH
Krefelder Strasse 32
70376 Stuttgart | Germany
T. +49 711 5000 77 116
F. +49 711 5000 77 22
ngm@atelier-brueckner.com

papersize	scale	unit	sign
DIN A2	N/A	mm	sm

filename
NGM-ATB_D_1.1.0.0_05

date	code	planningphase
02.09.2019	NGM-ATB	LPH 4 - DD

type	hierarchy	no.	index
D	1.1.0.0	05	00