

LEGEND

SPECIALISTS

M	MEDIEN
G	GRAPHIC
L	LIGHT
TGA	BUILDING TECHNOLOGY
	EXHIBITION ATB

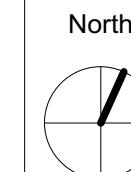
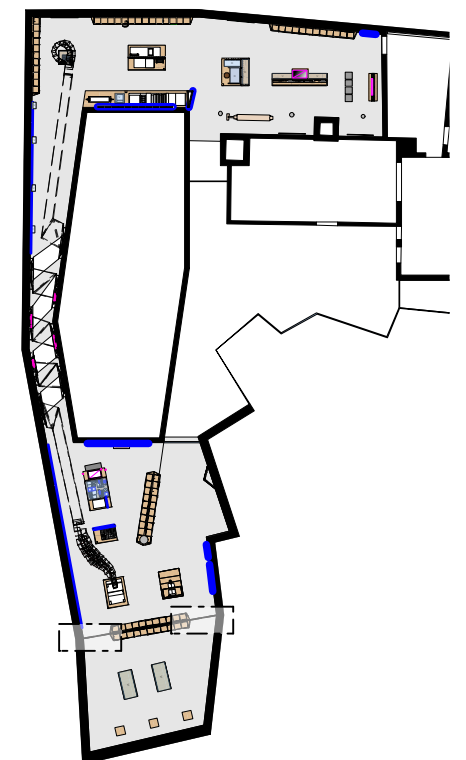
RELEASED

All measurements have to be revised carefully by the contractor/executor and compared with on-site situations. Differences concerning measurements or planning / stock have to be conveyed immediately to the designer. Details and drawings are only valid with annotation of approval by the designer.



NORWEGIAN PRINTING MUSEUM
STAVANGER

KEY PLAN



AREA PLAN

MODULE T - TEMPORARY EXHIBITION

client **Museum Stavanger**
Øvre Strandgate 88
4005 Stavanger | Norwegian
T. +47 40 60 17 01
www.museumstavanger.no
bitten.bakke@museumstavanger.no

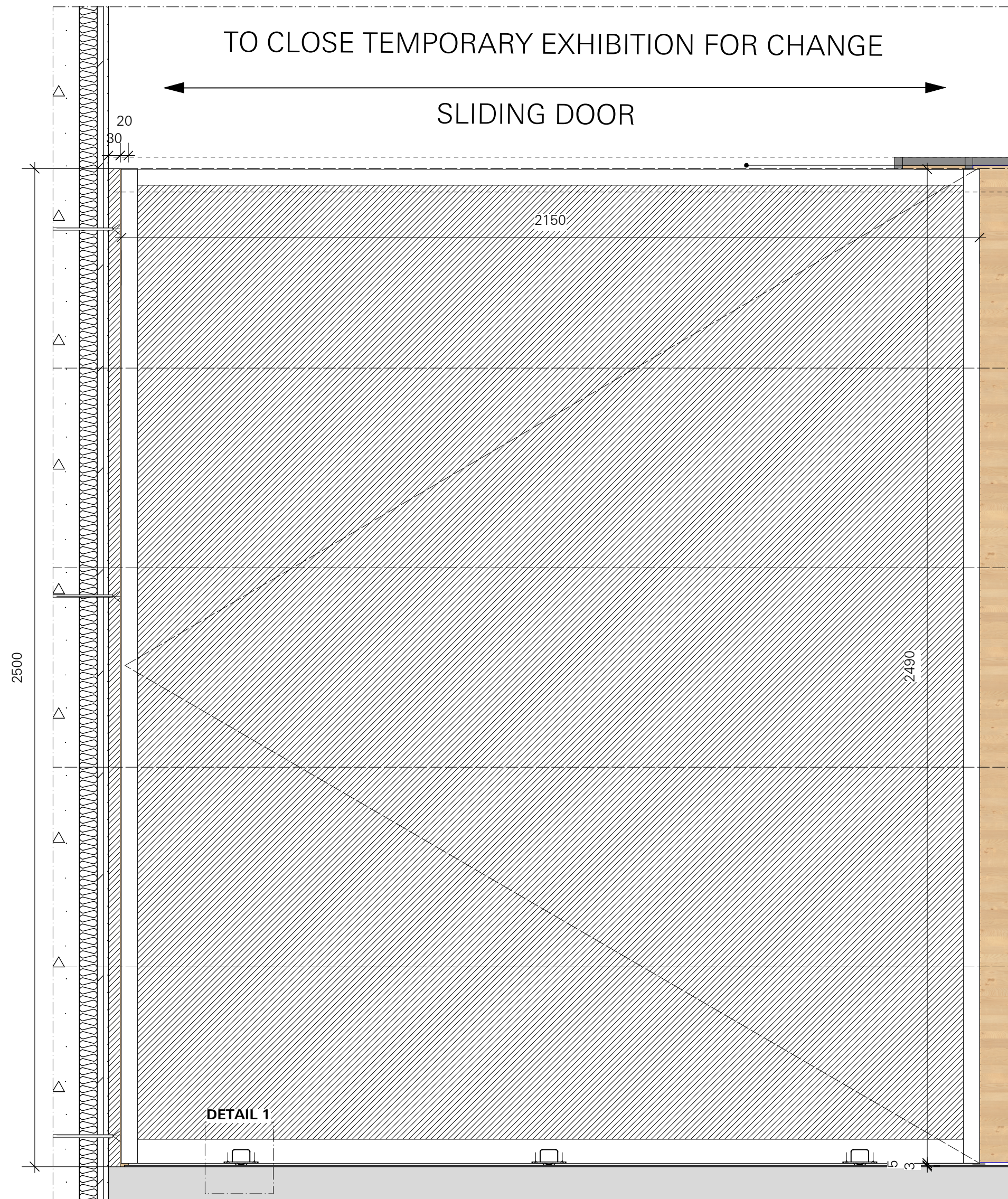
planner exhibition szenography **ATELIER BRÜCKNER GMBH**
Krefelder Strasse 32
70376 Stuttgart | Germany
T. +49 711 5000 77 116
F. +49 711 5000 77 22
ngm@atelier-brueckner.com

papersize	scale	unit	sign
DIN A2	1:10/2	mm	sm

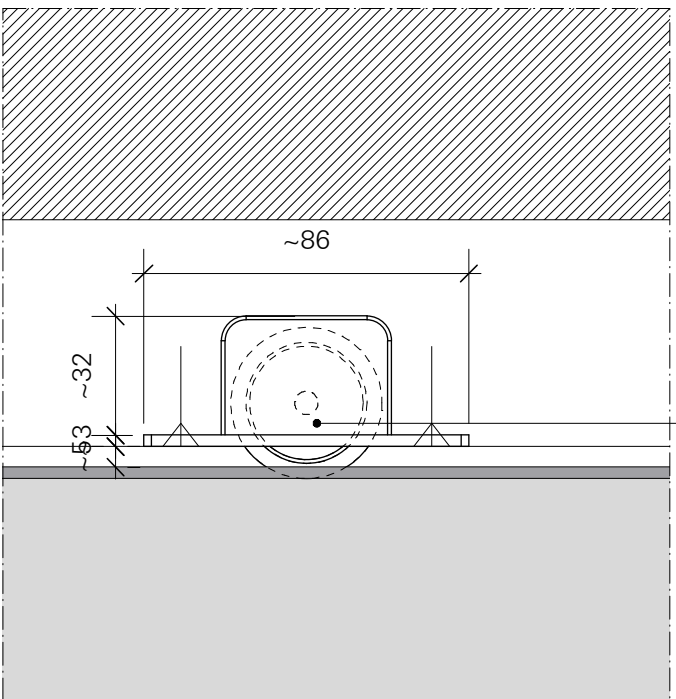
filename
NGM-ATB_D_1.7.3.0_01

date	code	planningphase
13.09.2019	NGM-ATB	LPH 4 - DD

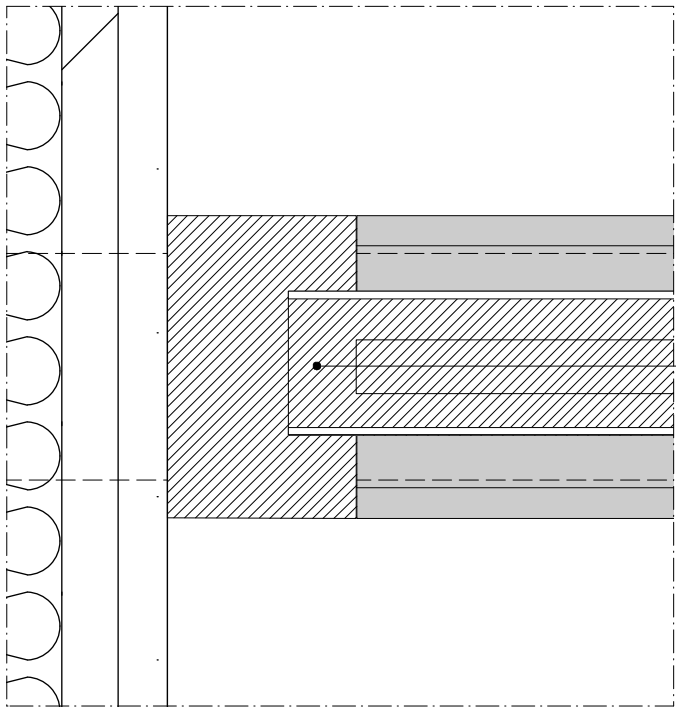
type	hierarchy	no.	index
D	1.7.3.0	01	00



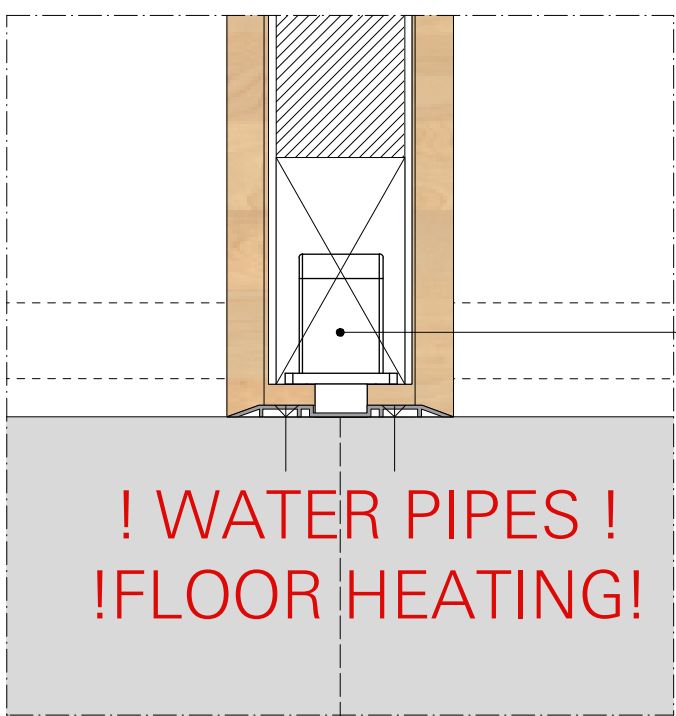
if necessary, top rail to prevent tipping and ensure smooth running



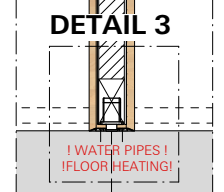
inlet-furniture roll, soft running surface, min. 60kg/roll, wheel d= approx. 40mm, Häfele or similar



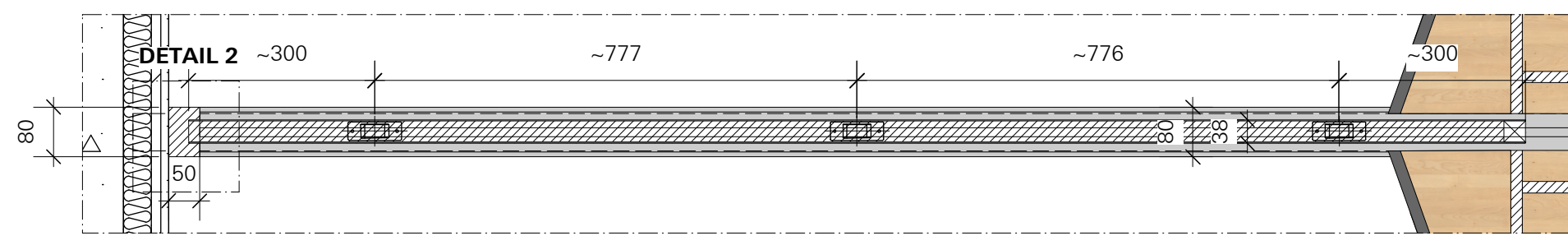
no lock required



inlet-furniture roll, soft running surface, min. 60kg/roll, wheel d= approx. 40cm, Häfele or similar



SECTION A M 1:10



SECTION A M 1:10