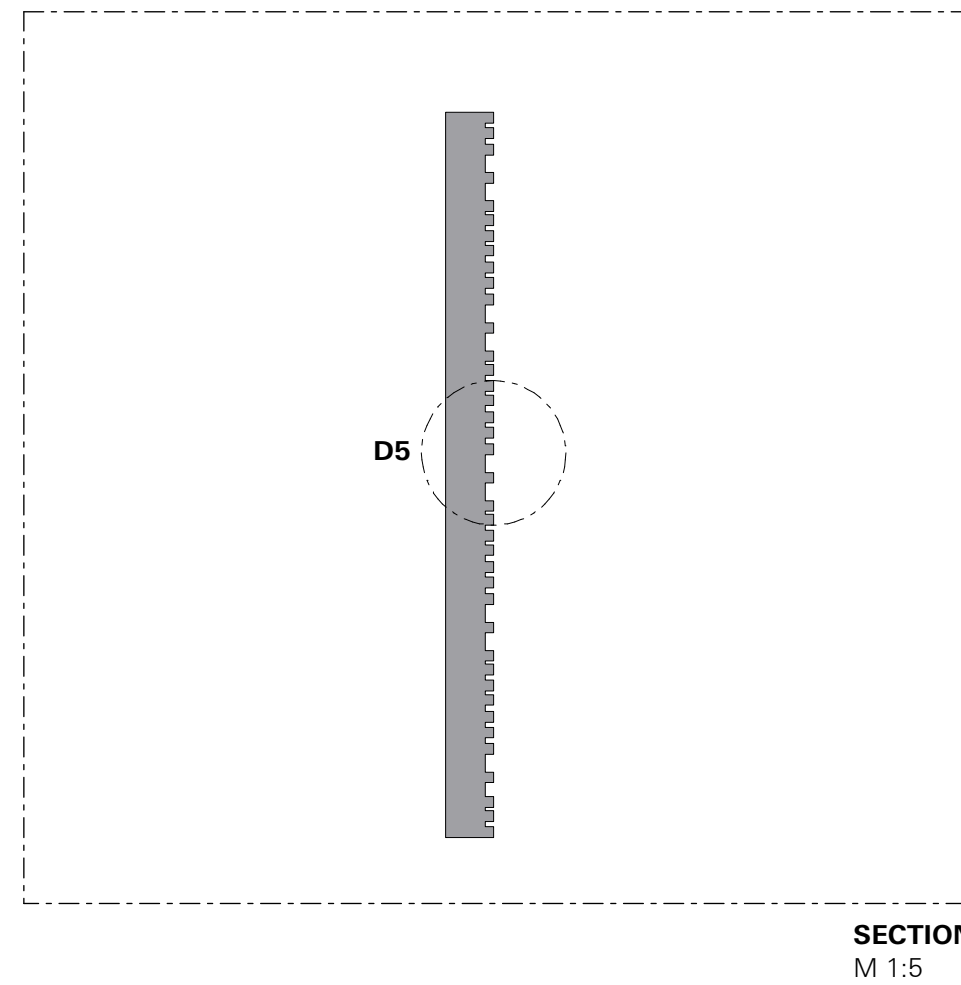
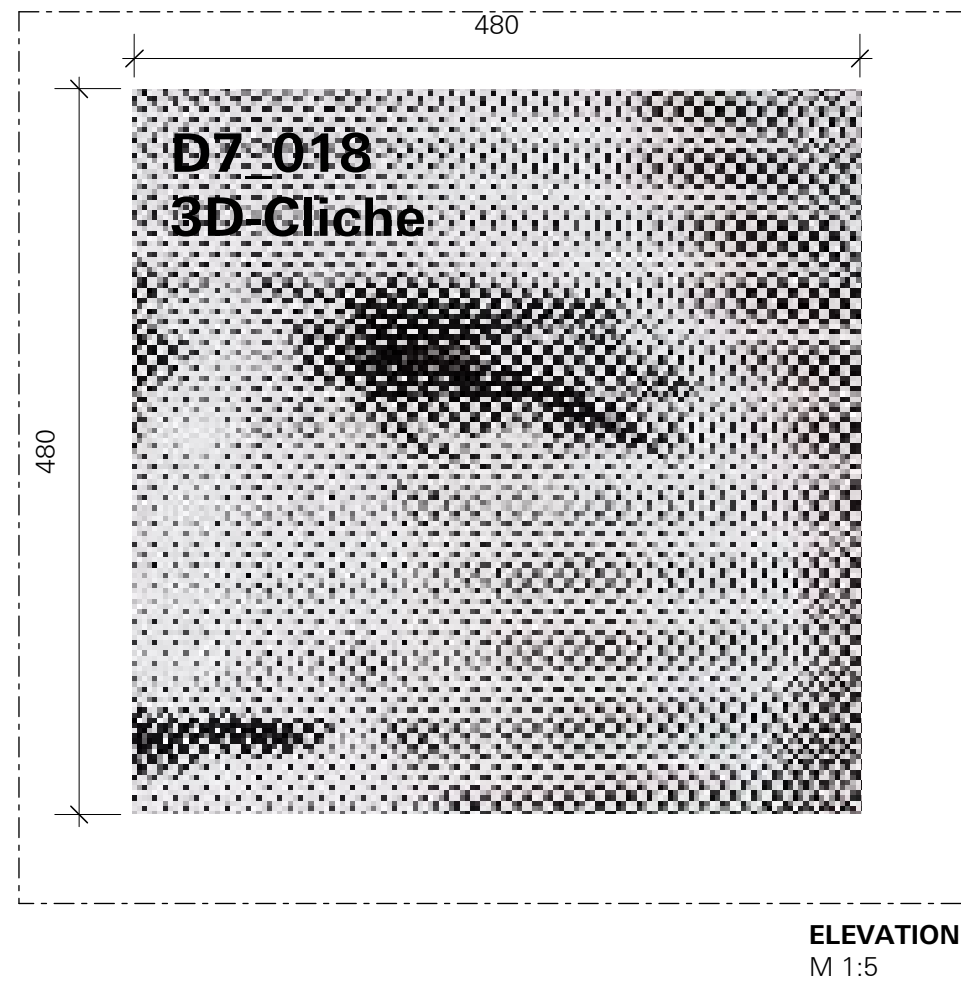


SPECIAL DESIGN SHELF COMPONENTS
MODULE D7

OPTIONAL

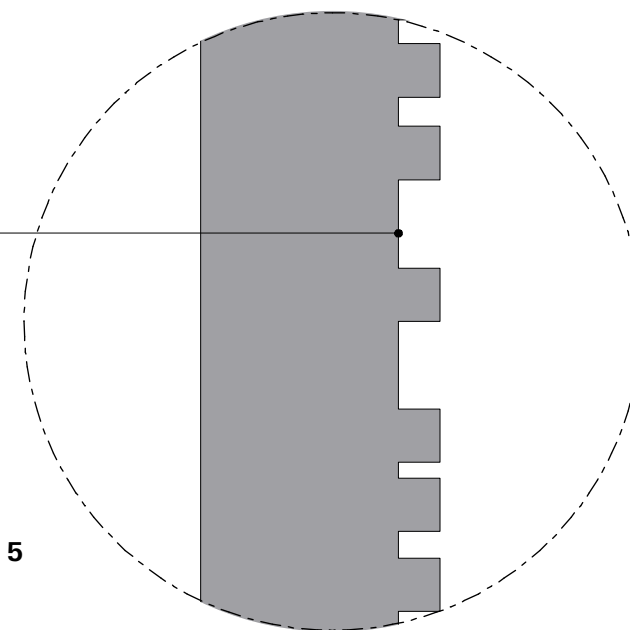
Pos.1.7.11
3D-CLICHE
D7_018



manufacturing a 3D «mock up» of a cliche, milled into wood. Based on image file.
File creation to be discussed

ATB can help to create the necessary file for the machine to mill this. This is currently not included in our budget.
-> Additional costs.

DETAIL 5
M 1:1



LEGEND

SPECIALISTS

M	MEDIEN
G	GRAPHIC
L	LIGHT
TGA	BUILDING TECHNOLOGY
	EXHIBITION ATB

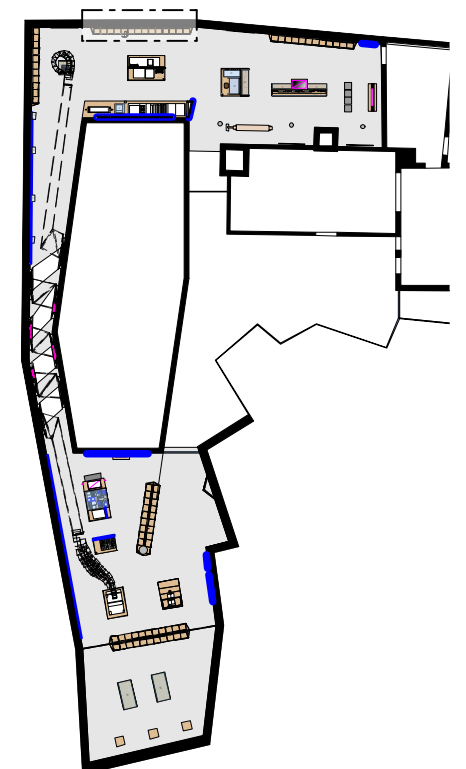
RELEASED

All measurements have to be revised carefully by the contractor/executor and compared with on-site situations. Differences concerning measurements or planning / stock have to be conveyed immediately to the designer. Details and drawings are only valid with annotation of approval by the designer.



NORWEGIAN PRINTING MUSEUM
STAVANGER

KEY PLAN



DETAIL PLAN - SPECIAL SHELF COMPONENTS
LETTERCASE SHELF - MODULE D5/D7

client **Museum Stavanger**
Øvre Strandgate 88
4005 Stavanger | Norwegian
T. +47 40 60 17 01
www.museumstavanger.no
bitten.bakke@museumstavanger.no

planner exhibition scenography **ATELIER BRÜCKNER GMBH**
Krefelder Strasse 32
70376 Stuttgart | Germany
T. +49 711 5000 77 116
F. +49 711 5000 77 22
ngm@atelier-brueckner.com

papersize	scale	unit	sign
DIN A2	1:1, 1:5	mm	sm

filename
NGM-ATB_D_1.5.2.0_03

date	code	planningphase
13.09.2019	NGM-ATB	LPH 4 - DD

type	hierarchy	no.	index
D	1.5.2.0	03	00