

LEGEND

SPECIALISTS

M	MEDIEN
G	GRAPHIC
L	LIGHT
TGA	BUILDING TECHNOLOGY
	EXHIBITION ATB

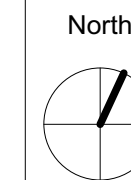
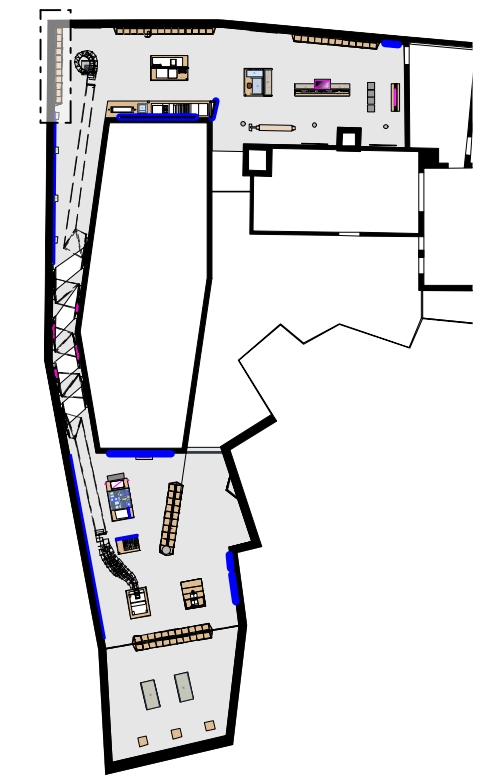
RELEASED

All measurements have to be revised carefully by the contractor/executor and compared with on-site situations. Differences concerning measurements or planning / stock have to be conveyed immediately to the designer. Details and drawings are only valid with annotation of approval by the designer.



NORWEGIAN PRINTING MUSEUM
 STAVANGER

KEY PLAN



DETAIL PLAN - MODULE D
 LETTERCASE SHELF - MODULE D2/D9/D8

client **Museum Stavanger**
 Øvre Strandgate 88
 4005 Stavanger I Norwegian
 T. +47 40 60 17 01
 www.museumstavanger.no
 bitten.bakke@museumstavanger.no

planner exhibition scenography **ATELIER BRÜCKNER GMBH**
 Krefelder Strasse 32
 70376 Stuttgart I Germany
 T. +49 711 5000 77 116
 F. +49 711 5000 77 22
 ngm@atelier-brueckner.com

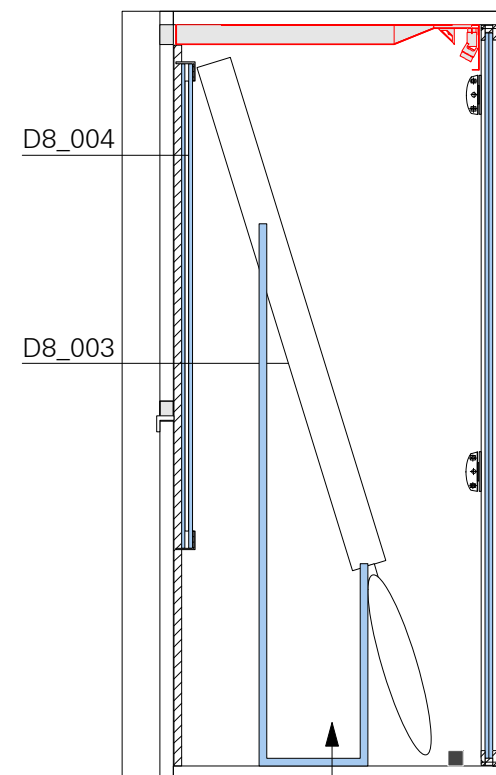
papersize	scale	unit	sign
DIN A2	1:20	mm	sm

filename
NGM-ATB_D_1.5.1.0_02

date	code	planningphase
13.09.2019	NGM-ATB	LPH 4 - DD

type	hierarchy	no.	index
D	1.5.1.0	02	00

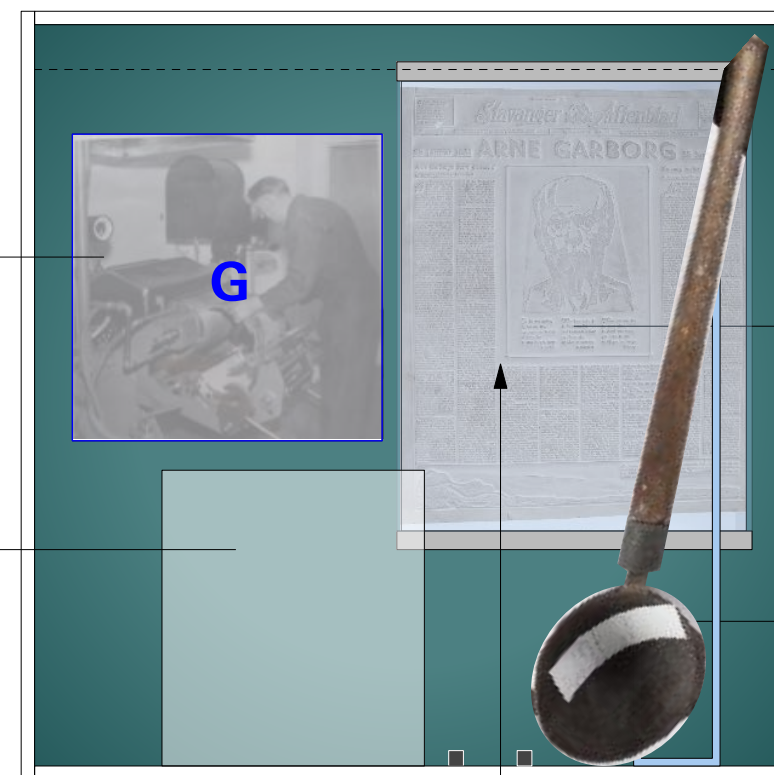
2x2 SHOWCASE
 MODULE D8



SECTION
 M 1:10

D8_G008a
 D8_G008a
 -C-N/E
 graphic print of
 forex, fixed to
 backwall

D8_002
 standing on floor



ELEVATION
 M 1:10

D8_004
 Paper matrice.
 Ca. 45 x 58 cm
 object holder
 no metal against paper

D8_003
 Lead ladle, metal
 and wood. L ca.
 90 cm, B ca. 25
 cm, H ca. 10 cm

GENERAL CONSTRUCTION DETAIL OF
 LETTERCASE SHELF PLEASE SEE PLAN:
 NGM-ATB_D_1.0.1.0_01
 NGM-ATB_D_1.0.2.0_01

All object holders acc. to
 conservatroy requirements:
 see plan: NGM-ATB_D_1.0.1.0_01
 see plan: NGM-ATB_D_1.0.1.0_02

Pos.1.7.6.1
OBJECT HOLDER
 for D8_003
 M 1:5



stand, acrylic glass holder,
 for lead ladle, as minimal
 and less visible as
 possible, to be developed
 with exhibit, acc. to
 conservatroy requirements

Pos.1.7.6.2
OBJECT HOLDER
 for D8_004
 M 1:10

