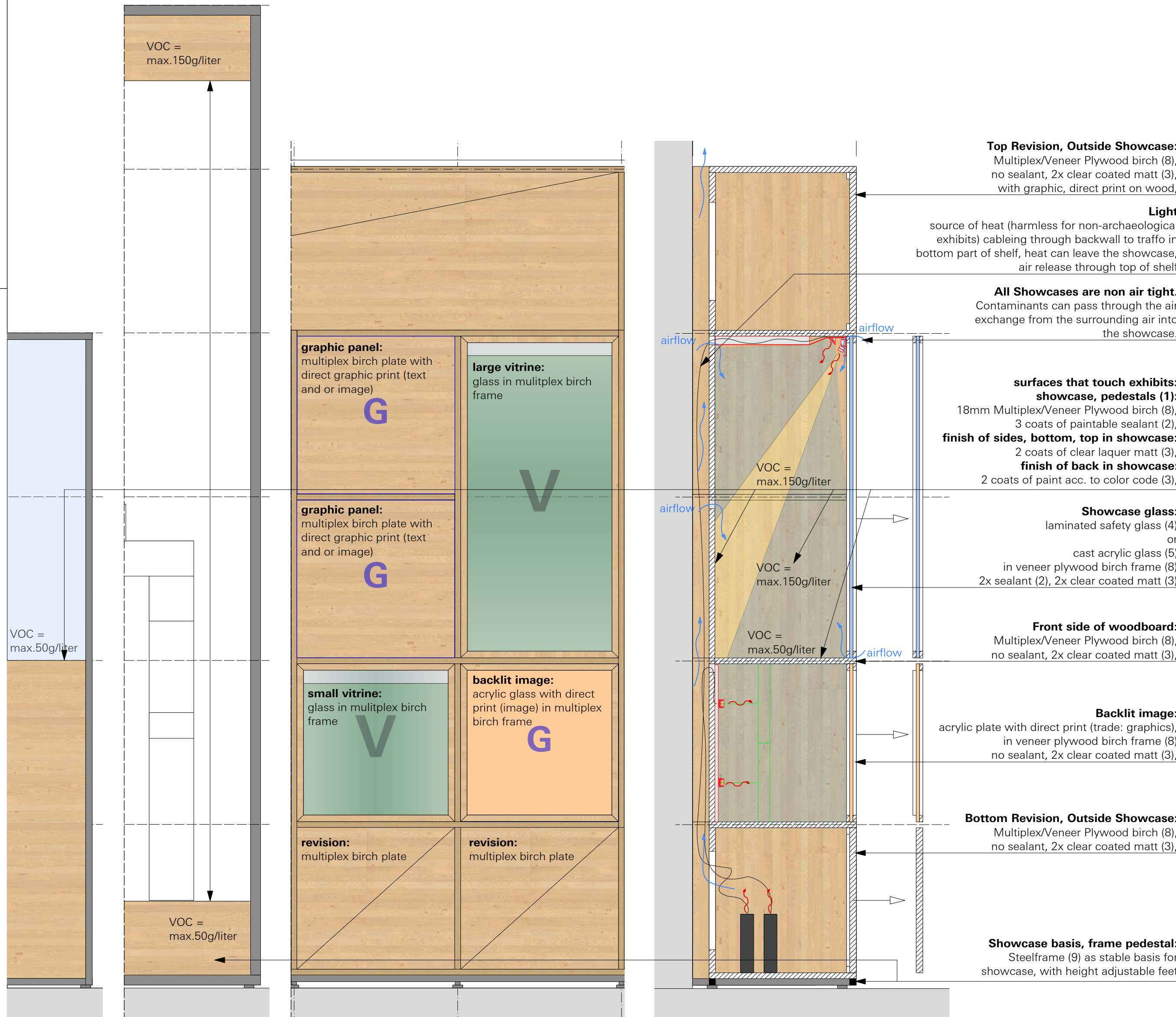


**MATERIAL REQUIREMENTS**  
FOR CONSERVATION REQUIREMENTS OF EXHIBITS.



GENERAL SHOWCASE  
GENERAL PEDESTAL  
GENERAL LETTERCASE SHELF



(8) Veneer Plywood/  
Multiplex birch,  
ca. 18mm



(4) laminated glass  
or (5) acrylic glass  
for all showcases



(9) steel frame for basis of  
all shelves, pedestals and  
showcases

**REQUIREMENTS FOR MATERIALS**

**(1) Inside Showcase, Pedestal surfaces:**  
no substances emitting formaldehyde, volatile acid or other corrosive volatile organic compounds shall be used inside casework environment. (zero formaldehyde)

**(2) Sealant/liquid membrane barrier:**  
All woods inside showcases and pedestal tops touching exhibits shall be sealed with 3 layers of either two-part epoxy or waterborne polyurethanes before painted. (oddy-Test approved)

eg. product: Sancure by Lubrizol or equal

**(3) Paint/laquer/vanish:**  
water based 100% acrylic paints, (VOC level should not exceed 150g/liter for non flat surfaces and 50g/liter for flat surfaces/touching exhibits). conservation-approved paint by oddy-test (no oil-based)

eg. product: Resene Paints, waterborne laquer, or Morrells (M) - 2 - Butoxythanol (passed oddy-test)

**(4) laminated glass:**  
laminated safety glass, opti white, thickness acc. to static requirements

**(5) acrylic glass:**  
100% cast acrylic glass, (no extruded glass allowed) no anti-reflective acrylic or abrasion resistant coated acrylic. good clarity, thickness acc. to static requirements

eg. UF3 by plexiglass or OP2 by Acrylite

**bonding methods:**  
PS 30, UV-bonding (museum quality), solvent bonding

**(6) adhesive/sealant:**  
Silicon sealant

eg. product: Dow corning (M), sealant, SILICONE ELASTOMER. (approved by oddy-test)

**(7) Graphic boards within showcase:**  
graphics within the showcase, direct print on Forex or wood (= multiplex).

**(8) Veneer Plywood/ Multiplex**  
with non urea-formaldehyde adhesives, Quality = I or AB or better. almost knot-free, colour inlets are possible, light. Few healthy knots are possible, but rather rare, no interfaces.  
thickness ca 18mm, acc. to static requirements

**(9) Steel**  
steel with mitre joint edges, clean and sanded welding, height adjustable feet suitable for floor (stone/concrete). powder coated

**(10) MDF**  
with non urea-formaldehyde adhesives, min. 2 layers of membrane sealang required before painted

eg. Medex or Medite II

FOR ALL OTHER MATERIALS PLEASE SEE MATERIAL, COLOUR AND PRODUCT LIST

**After all the furniture and showcases have been installed on site, they must off-gass/acclimate for 6 weeks before the equipment with exhibits can begin. See schedule for timeframe.**

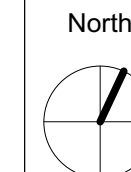
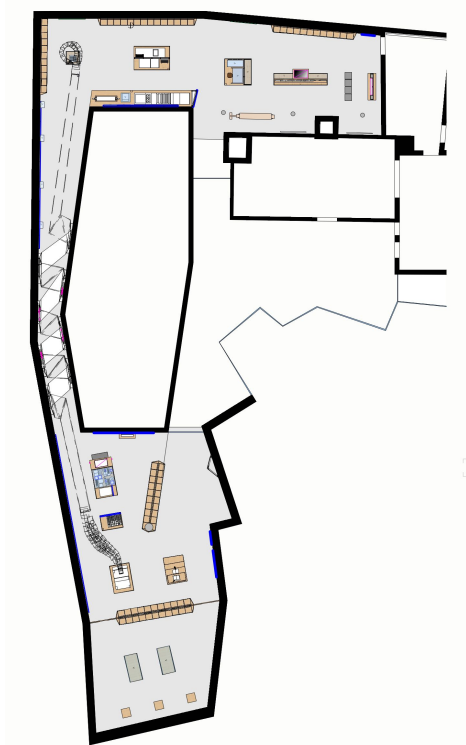
**RELEASED**

All measurements have to be revised carefully by the contractor/executor and compared with on-site situations. Differences concerning measurements or planning / stock have to be conveyed immediately to the designer. Details and drawings are only valid with annotation of approval by the designer.



**NORWEGIAN PRINTING MUSEUM**  
STAVANGER

**KEY PLAN**



**Conservation Requirements**

Material requirements for all furnitures

**client** Museum Stavanger  
Øvre Strandgate 88  
4005 Stavanger I Norwegian  
T. +47 40 60 17 01  
www.museumstavanger.no  
bitten.bakke@museumstavanger.no

**planner exhibition scenography** ATELIER BRÜCKNER GMBH  
Krefelder Strasse 32  
70376 Stuttgart I Germany  
T. +49 711 5000 77 116  
F. +49 711 5000 77 22  
ngm@atelier-brueckner.com

papersize	scale	unit	sign
<b>DIN A2</b>	<b>1:10</b>	<b>mm</b>	<b>sm</b>

filename  
**NGM-ATB\_D\_1.0.1.0\_01**

date	code	planningphase
<b>13.09.2019</b>	<b>NGM-ATB</b>	<b>LPH 4 - DD</b>

type	hierarchy	no.	index
<b>D</b>	<b>1.0.1.0</b>	<b>01</b>	<b>00</b>