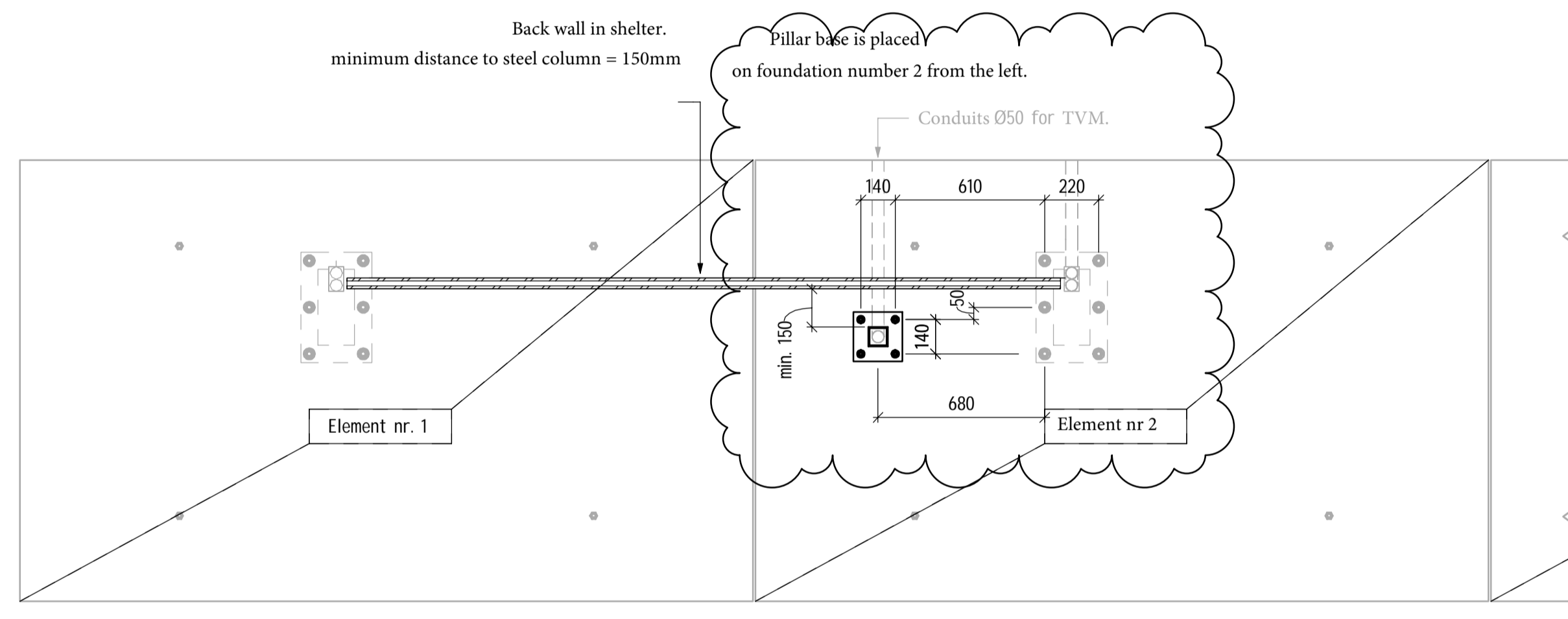


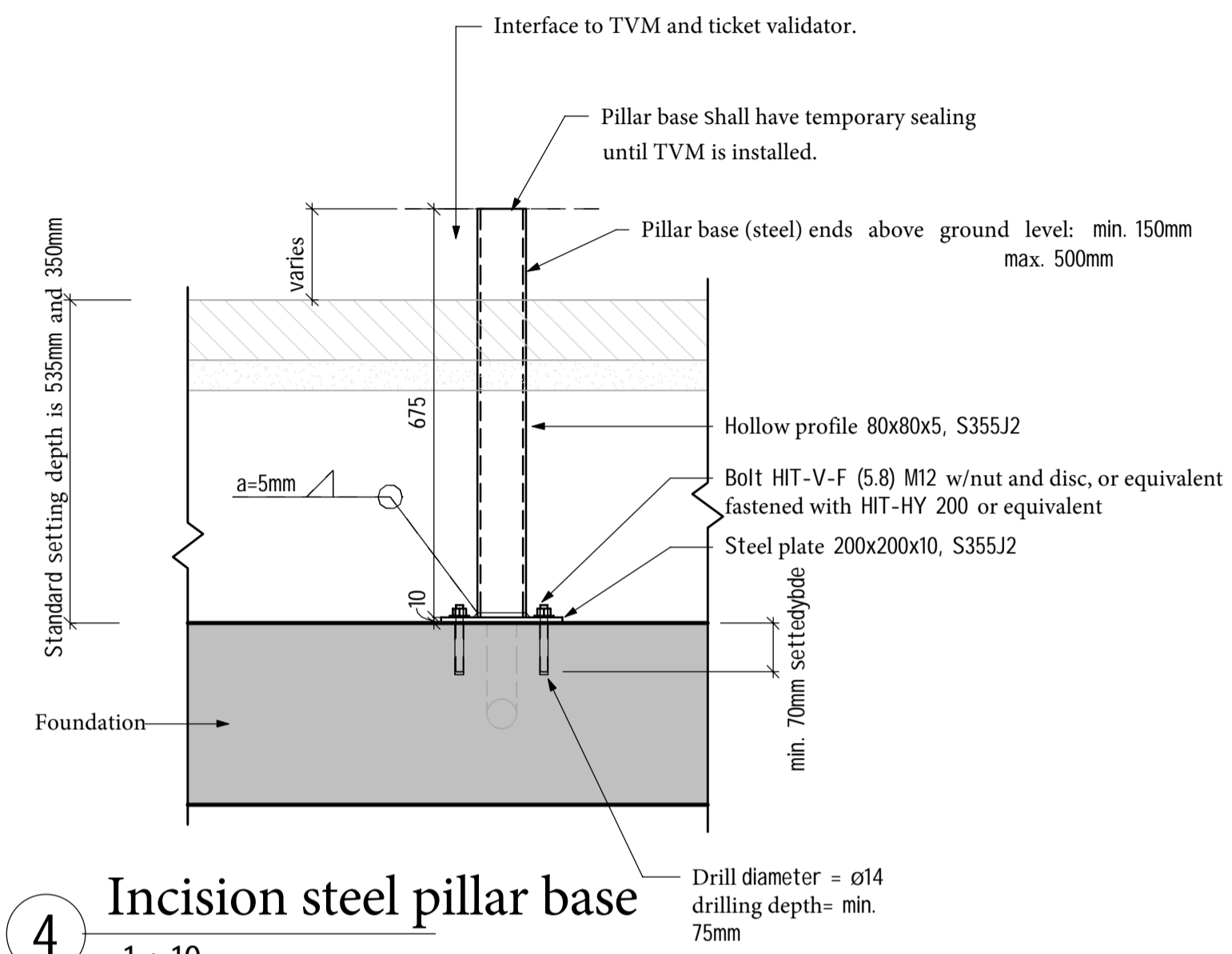
1 3D - Illustration pillar base for TVM and ticket validator.



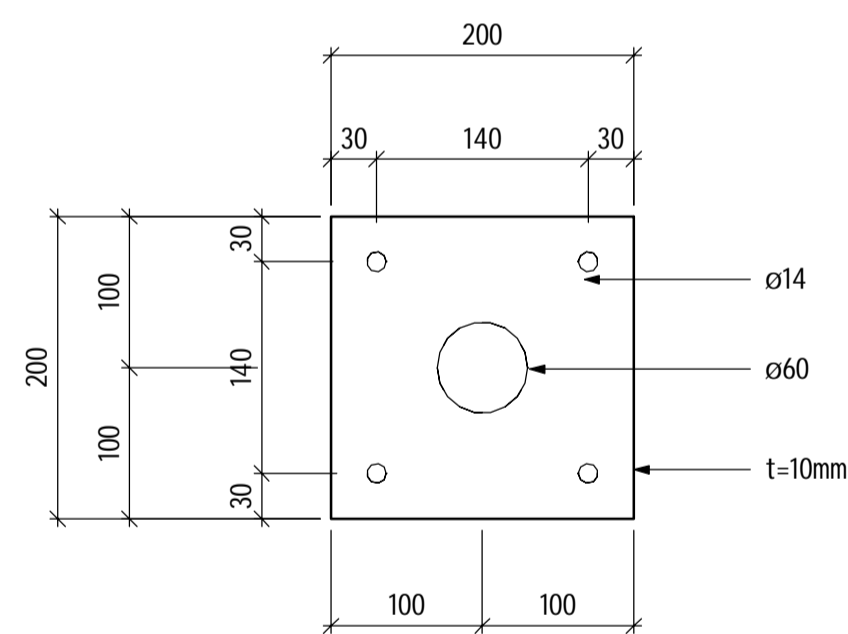
2 Placement of pillar base for TVM and ticket validator.
1 : 20
For foundation type 1 and 2 see drawing: K100 Foundation plan and incision.



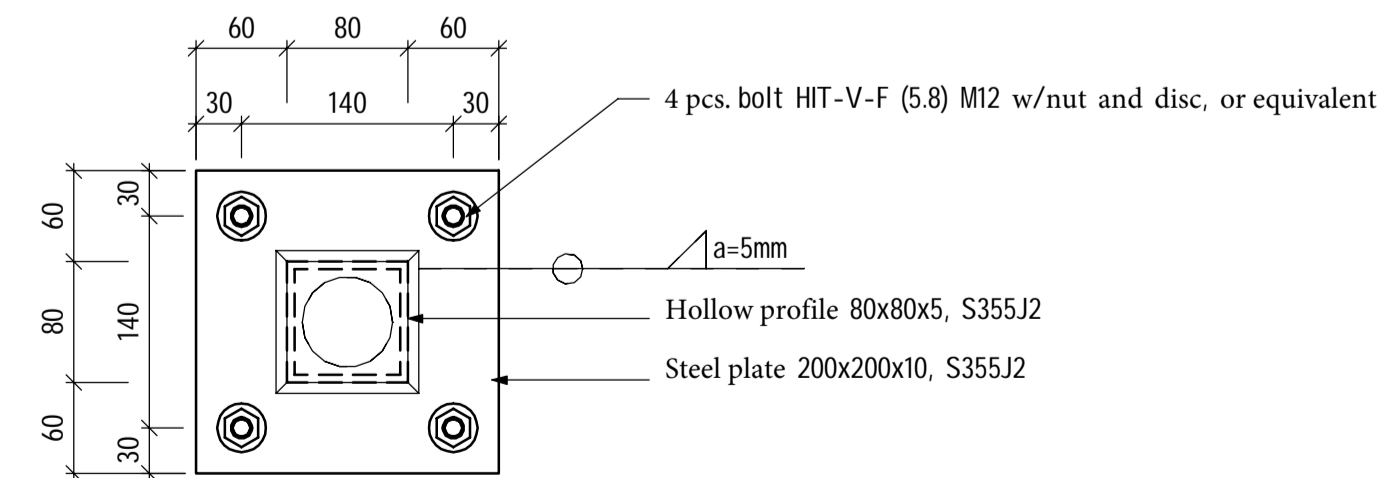
3 Placement of pillar base for TVM and ticket validator.
1 : 20
For stations with 3m shelter on single foundation see drawing: K103 Single foundation with TVM - Plan, incision and armouring.



4 Incision steel pillar base
1 : 10
Drill diameter - ø14
drilling depth= min. 75mm



5 Steel plate
1 : 5



6 Flat steel pillar base
1 : 5

REFERRALS.

K100 Foundation plan and incisions
K103 Single foundation with TVM - Plan, incision and armouring.

DESCRIPTION

85 STEEL
85.1 SHELTER
01 Supply of steel materials

Special description

Applies to complete delivery and assembly of steel pillar base with hollow profile 80x80x5mm, S355J2, with welded plate (weld a = 5mm) with dimension 200x200x10mm, and 4 pcs holes -14 mm+centric hole ø60.
All steel is delivered hot-dip galvanized.
Assembly: Drill down for bolts HIT-V-F (5.8) M12 w/nut and washer, or equivalent. Fastened with HIT-HY 200 or equivalent. Drill depth min 75mm, set depth min 70mm.

stk 1

STEEL STRUCTURES			
ENGINEERED AFTER NS-EN 1993-1-1:2005+NA:2008			
MATERIAL QUALITIES:			
CONSTRUCTION STEEL:		UTE	S355J2
SKREWS AND NUTS:			5.8
CONSEQUENCE CLASS	CC1	PERFORMANCE CLASS:	EXC2
USE CATEGORY	P2	TOLERANCE CL. FUNCTION	2
PRODUCTION CATEGORY	PC2	TOLERANCE	NS-EN 1090-2, D2
SURFACE TREATMENT:			
DURABILITY INTERVAL FOR SURFACE TREATMENT: 5 TO 15 YEARS(M)			
CORROSIVITY	STEEL OUT- C3	RECOMMENDED PAINT SYSTEM	CHOSEN BY SUP.
REMARKS: RENGØRINGSGRAD 10 tb. 22			
Steel constructions must be delivered CE-marked acc. CPR/NS-EN 1090-1			

D	Adjusted position of pillar base	DEHA	IFM	IFM	22.05.2018
C	Adjusted placement of the conduit to TVM	DEHA	ERHAU	IFM	07.05.2018
B	Changes acc to comments from the developer	DEHA	ERHAU	IFM	27.04.2018
A	Blueprint	DEHA	ERHAU	IFM	26.04.2018
Revisjon	Revisjonen gjelder	Utarbeidet	Kontrollert	Godkjent	Rev dato
Tegningsdato		26.04.2018			
Bestiller		Abbas			
Produsert for		Region midt			
Prinsipp tegning		Produsert av		RAMBOLL	
Foundation for shelter		PROF-nummer		Superbuss_2017	
Pillar base for TVM and ticket validator		Arkivnummer			
ARBIDSTEGNING		Byggesaknummer			
Utarbeidet av		Målestokk A1		1:20 1:10 1:5	
Kontrollert av		Tegningsnummer/		K104	
Godkjent av		revisjonsbokstav		D	
Konsulentarkiv		1350022587			